

Hello!

We're happy our annual report has found its way to you. We hope that the stories and photographs about our community, our grantees and donors are inspiring and make you proud to be part of Grand Rapids Community Foundation.

Off and Running! *Our Challenge Scholars Head for Success*

Our Future

In May 2014, we introduced our first class of Challenge Scholars—137 sixth graders from Harrison Park School and Westwood Middle School on Grand Rapids' West Side. The students and their families will be participating in college-readiness programming until the students enroll in college in 2020. And better yet, every class of students after them will be Challenge Scholars too!

Good Work

This year we awarded \$10.7 million in grants to West Michigan nonprofits that are working to make our community better in the areas of education, arts and social engagement, the environment, health, neighborhoods and economic prosperity. We set a record in scholarship awards with \$1.1 million going to students working to achieve a college education.

The Money

This year, generous people made \$16.7 million in contributions to Grand Rapids Community Foundation, helping grow our endowment to \$329 million at fiscal year ending June 30, 2014.

Celebrate!

This year, Grand Rapids Community Foundation was honored with the Grand Rapids Area Chamber of Commerce's Diversity Visionary Award. This award recognized our efforts to create an inclusive organization and our efforts to make Grand Rapids a more welcoming and equitable community.



Community happen here. Forbes recently named Grand Rapids as the 2nd best city to raise a family. National online polls made us Beer City USA, and Time Magazine ranked ArtPrize as a global five festive event. Local



Dear Friends,

This is the centennial year of the community foundation movement. The first community foundation was created in Cleveland in 1914. Grand Rapids soon followed with our founding in 1922. Now there are over 800 community foundations in the United States and 190 in Canada. Our community foundation colleagues do great things in every corner of the globe, and we're proud to be celebrating our collective good work with them this year.

Over the last 92 years we've grown in our reach and impact, and this year was especially notable. In May we introduced our first class of Challenge Scholars students—soon to be the Union High School Class of 2020. These students, now seventh graders at Harrison Park and Westwood Middle School, are full of promise and excitement for what their future holds—the promise of education after high school. Because we want these young people to be ready for college success when they graduate, we're creating a college-going culture at these schools that involves students and families. Challenge Scholars students are learning about the rigor of college and skilled trade education long before they choose which school to attend.

Growing hope in these children is as important as anything we as a community will ever do. That's why we launched a \$32 million fundraising campaign, and, within a year, generous donors

gave \$26.7 million. Will you help us close out this year and campaign phase to raise the additional \$5.3 million? We've promised to support and provide higher education or vocational training for nearly 200 students a year, every year into the future. Fulfilling that promise requires no small sum. But it's worth the investment, because our community will benefit from having a highly educated and skilled workforce.

Your contribution helped us make so many interesting and important grants this year. As you read about them in this annual report, we hope you'll see how your contribution is making our community a better place to live and work. We are so grateful for your support this year. We trust you'll keep walking with us on our shared journey to make Kent County great now—and even better in the future.

Diana R. Sieger
President

Wayman Britt
Board Chair



Mike and Christina Rosloniec
Growing in Family Philanthropy

One day, when Anna and Ella take control of The Rosloniec Family Fund at Grand Rapids Community Foundation, their parents believe they'll be great at making thoughtful giving decisions. The sisters, ages 14 and 10 respectively, have been involved with giving back since they were very young. "Our plan, our expectation, is that these two will take over one day and direct what our family fund supports," Mike said. "They have been volunteering alongside me at Gilda's Club since they were babies. For the last two years, they have been volunteering for the big Halloween party there. Giving is about being involved and, as volunteers, seeing the need with our own eyes and helping," Christina said.

For Mike and Christina, their Donor Advised Fund at the Community Foundation is rooted in accountability and convenience. Mike, who serves as a Foundation Trustee and chairs the Investment Review Committee, has in-depth knowledge of how the organization invests and spends its endowment. Mike was aware for years of Donor Advised Funds and their uses. Yet, not until he heard a presentation at a Board meeting did he see his family as potential donor advisors. He wanted to involve their daughters. "For us, it meant an easier option for recordkeeping. We make a donation once a year to our fund and then make grants throughout the year," he said. "The Community Foundation is easy to work with. We feel like we can help the community broadly, but also can be targeted with our giving. We like that flexibility," Christina said.

"There is a giving culture in Grand Rapids. We see the names of generous people all over this town—and, if it wasn't for them, Grand Rapids would not be what it is. Everyone, though, has to do their part. Whatever you can do to help matters. It counts," Christina said.

“Our plan, our expectation, is that these two will take over one day and direct what our family fund supports.”

Healthy Waters Happen Here

Grantee: Schrems West Michigan Trout Unlimited. Schrems is an all-volunteer chapter with 1,000 members in 11 counties.
Amount: \$100,000

The project: With a Community Foundation grant in 2013, Schrems completed a comprehensive inventory of coldwater streams in Kent County. The inventory included information on stream location, biology and more than 150 impairments. The current grant helps Schrems improve six coldwater streams, based on inventory data and prioritized by features like temperature, connectivity, public access and fish community.

Why it matters: "Right now we're working on cleaning up a blown-out dam. There are big chunks of concrete and rebar in the Rogue River that are dangerous for kayakers, especially," said chapter member Tom Mundt. This Rockford-area dam, located near an old paper factory, was destroyed in the flood of 1986. Our grant also helps Schrems add in-stream habitats, reforest riverbanks, restore headwater wetlands and study dam removal feasibility. The Community

Foundation grant helped the local chapter leverage volunteer hours for an Environmental Protection Agency match and secure funding from Plainfield Township. The restoration work is scheduled for completion in fall 2014.

Why this is a great grant: "Our local Trout Unlimited group emphasizes not only habitat preservation within our coldwater fisheries, but also pollution abatement, stream improvement, watershed rehabilitation and lake and stream reclamation. The disappearance of our trout and salmon population would result in the loss of a unique recreational opportunity—as well as the jobs and economic benefit brought on by anglers visiting our region. A Department of Natural Resources survey found that the Rogue River brings in \$485,000 per year in fishing trips alone."

—Kate Luckert Schmid
Program Director, Grand Rapids Community Foundation



“The disappearance of our trout and salmon population would result in the loss of a unique recreational opportunity—as well as the jobs and economic benefit.”
—Kate Luckert Schmid

Teresa Thome and Fred Stella
Honoring the Past, Looking to the Future

When Teresa Thome and Fred Stella decided to create the N. Jene Stella Memorial Fund, a Donor Advised Fund at the Community Foundation, they came with money and an idea. The couple wanted to see if it was possible to invest the assets in a socially responsible investment (SRI) pool. At the time, the Community Foundation didn't offer one. "We wanted to see if an SRI fund was available, and, when the Community Foundation told us they'd explore it, we were willing to be guinea pigs," Fred said. "Prior to Teresa and Fred, no one had expressed real interest in an SRI pool. When they told us it was personally important to them, we were happy to present some options. The result of this work together is an investment opportunity that we believe will appeal to potential donors," said Marilyn Zack, vice president of development.

Teresa and Fred support triple bottom line businesses and fair trade. They want to make sure workers at companies they invest in are treated well. On the local level, their giving leans toward progressive causes. "We care about education,

the arts, the environment, and we are very strong allies in the LGBT community," Teresa said. Fred is well-known in West Michigan for his radio program, *Common Threads*, and as the president of the Interfaith Dialogue Association. Teresa is a partner in a television and web entertainment company and spends a lot of time working in LA. "The Community Foundation helps me keep my community connection and gives me a way to stay involved. I'm happy to be a part of it and stay grounded in the community," she said.

Their fund was created after Fred's mother died. "My mother, brother and I had some investments together, and, before she passed away, I asked her if she wanted us to create a charitable fund with her share. She did, and Teresa suggested the Community Foundation," Fred said. Their fund also honors Teresa's father, because she added her inheritance from his estate to the fund. "We've always loved the giving spirit of Grand Rapids. We want to live in a community that has success at all levels," Teresa said.

"We care about education, the arts, the environment, and we are very strong allies of the LGBT community."



"Since I was eighteen, I've always wanted to own a house. I love this neighborhood. I think it will bring my family closer."



Happy Families Happen Here

Grantee: Habitat for Humanity of Kent County
Amount: \$150,000

The project: Habitat for Humanity of Kent County is celebrating 30 years of building and rehabbing houses in metro Grand Rapids. The Community Foundation grant is for Habitat's new Building Blocks program, which shifts focus from individual homes to entire streets and blocks. Habitat will build new homes, rehab vacant houses and repair old homes so West Side neighborhoods will become more affordable, beautiful, safe and stable.

Why it matters: When she applied to be a Habitat homeowner, Tennille Harkness looked specifically at homes and properties on Grand Rapids' West Side. She liked its feel. She loves that she can see Harrison Park School from her home. "I wanted my kids to go to the same school from kindergarten to eighth grade," she said. Her daughters Jurnee and Jasmine will do that as students at Harrison Park, where they'll become Challenge Scholars. She put in the required "sweat equity" hours and, with her kids, worked on their home's floors, siding and interior post-construction cleaning. She took homeownership classes before moving into her LEED-certified home so now she knows how to clean without chemicals and save energy.

Tennille heard about Habitat housing at Goodwill, where she's a store lead (manager). "My supervisor was a Habitat volunteer and suggested I apply. Since I was eighteen, I've always wanted to own a house. I love this neighborhood.

It's quiet and I know my neighbors. I think it will bring my family closer," she said. Habitat is building a home and repairing another on her block. Within a mile radius of Tennille's block, Habitat is building or rehabbing four more homes and repairing or renovating 10 homes. This targeted investment fills neighbors with hope and pride and will likely reduce crime while raising property values and civic engagement.

Why this is a great grant: "Habitat for Humanity has developed great partnerships throughout the community development system. With these partnerships, Habitat has increased its ability to construct homes that fit specific neighborhoods, which improves the appearance of those neighborhoods and maintains housing stock integrity. This approach also helps develop community support for Habitat and increases home ownership. Habitat's long-term strategy will focus needed attention on neighborhood revitalization activities on Grand Rapids' West Side."

—Laurie Craft
Program Director, Grand Rapids Community Foundation

Tennille Harkness and her family enjoy a warm afternoon on Grand Rapids' West Side.

Our Donors are the Best!

We are thankful to the many donors who make gifts each year to Grand Rapids Community Foundation.

You will find a list of donors on our website at www.grfoundation.org/donorlist.

*Rueben Smartt***Living African American Heritage**

Each year, Rueben Smartt supports Grand Rapids Community Foundation's African American Heritage Fund with a generous gift. It could be because at 89 years of age, he knows what it is like to have lived through some critical decades in American history. Or it could be because the Fund supports educational programs for African American youth, and Rueben, never a father himself, believes in investing in young people.

As a graduate of Knoxville College, Rueben recognizes the importance of youth reaching their potential through education. He and his late wife, Bertha, were teachers, stand-in parents and mentors to many. He recalls their home being full of children. "We might have had 16 or so children that stayed with us over time," he said.

Born in Kentucky, Rueben joined the Marine Corps in 1943 just after high school. He was part of the Montford Point Marines, the first unit of African American Marines in the United States, and was shipped to Okinawa and Iwo Jima during World War II. After the war he made Grand Rapids his home, moving here in 1947. For his valor and war-time service he was given the Congressional Gold Medal in 2012. His long life also included a run with a Negro League baseball team, the Grand Rapids Black Sox.

Rueben humbly reflects on his lifetime of giving back, "I'm a travelling disciple, and, if I can help somebody as I travel along, then my living is not in vain."

"I'm a travelling disciple, and, if I can help somebody as I travel along, then my living is not in vain."

*Allison Lugo Knapp*
A Philanthropist to Watch Out For

In her professional career she's worked for a community foundation, at the Johnson Center for Philanthropy and as an independent consultant for nonprofit and philanthropic organizations. She is an adjunct faculty member at Grand Valley State University School's of Public, Nonprofit and Health Administration. She also serves on Grand Rapids Community Foundation's Community Action Committee, which reviews and makes grant recommendations, and on our Advisory Council. Allison Lugo Knapp knows something about philanthropy!

"I bring an outsider's perspective that I think can be helpful," Allison said. She was raised in places around the world. She was born in Peru, of Colombian parents, and has lived in India, Connecticut and Guatemala. Her parents were living in Bolivia when she headed off to Michigan State University, where she earned a degree in international business and also met her husband, Tobin.

"Given my family background and the experiences I had growing up overseas (especially volunteering in developing countries), I knew I wanted to work with people and community in some capacity. When the opportunity came up to work at the Battle Creek Community Foundation, it seemed interesting and like a good fit. I couldn't have imagined that it would have opened the door to a career in philanthropy that I have spent over 10 years in," she said.

Allison's giving interests include the arts, education and the Latino community. She's been working with other women in the area to form a support network for Latina professionals. Tobin's philanthropic interests include the environment. The Traverse City native is passionate about conservation, particularly sustainability and the Great Lakes. They're supporting the Challenge Scholars program too. "Philanthropy is a value of ours. When an opportunity is given to you, you need to give an opportunity back," Tobin said.

Marilyn Titcher
An Exceptional Donor

People usually give to causes they care about. And then there's Marilyn Titcher. She supports causes and nonprofits that she doesn't even like, because they're good for the community at large. "I believe in keeping Grand Rapids competitive. If we need opera and contemporary art to attract talent to our city, I'll support it, even though I don't personally like it," she said. "I don't think like other people. We [Grand Rapids] have to provide what people want right here. People, especially those in the medical field, are coming here from all over the world. We have to compete with other cities to keep them here."

This decades-long donor to Grand Rapids Community Foundation appreciates the wide variety of grants made each year for literacy, libraries, the arts, housing and education—all "things that people need and that enhance their lives," she said. Her personal favorite cause and place is the Grand Rapids Public Library and its Small Business Resource Center programming. "I would like to help incubate an Amway. And when they become successful, they, hopefully, will give back to the library and the city," she said. "Giving back feels good. It's satisfying. When you give, you always get something back."



"I believe in keeping Grand Rapids competitive. If we need opera and contemporary art to attract talent to our city, I'll support it."

The Future Happens Here

Grantee: Grand Rapids Public Schools
Amount: \$500,000

The project: Earning a college degree or vocational certificate does more than fulfill dreams for students and families. It benefits the entire community by creating a more skilled, diverse and engaged workforce. Challenge Scholars provides academic, social and financial support to make higher education a reality for students at Harrison Park and Westwood Middle schools. While a college or vocational education scholarship is the reward for hard-working students on Grand Rapids' West Side, the in-school support and out-of-school experience differentiates Challenge Scholars from other college promise programs. This year's grant puts into place at Westwood Middle School a college/career coordinator and instructional coach—similar to what Harrison Park has. The grant will also help Union High School prepare for Challenge Scholars who will enter in fall 2016.

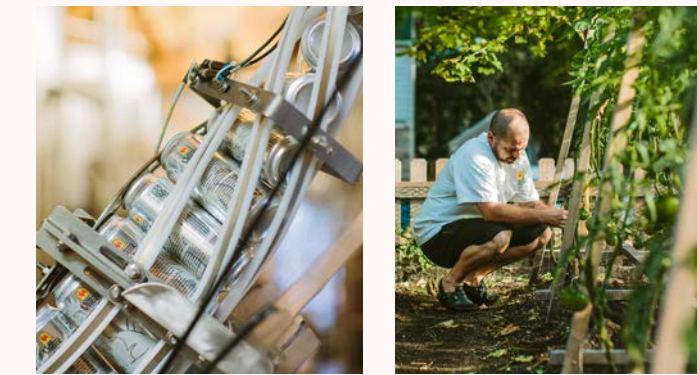
Why it matters: "Because of Challenge Scholars, I know I can talk to students and their families about the great opportunity that is being provided to them. This opportunity supports the work that staff members do every day. It represents hope for our families and their future. This scholarship takes away the guessing for our families about whether their students will be able to afford college. Removing that barrier allows the student, their family and the school to focus on the whole student without distractions," said Troy Wilton, Harrison Park principal.

"This opportunity represents hope for our families and their future."



Why this is a great grant: "Educational attainment is an economic issue as well as a social justice issue—and to address both we designed Challenge Scholars. Because of Challenge Scholars, Harrison Park and Westwood Middle School students know that a post-secondary education—and the life opportunities that brings—are within their reach. This Community Foundation grant not only prepares students for college but equips parents with knowledge and tools they need to support their children along the educational journey. These critical supports, along with the promise of a college scholarship, make Challenge Scholars a game-changer for families on the West Side."

—Cris Kutzli
Challenge Scholars Co-Director, Grand Rapids Community Foundation



Both Brewery Vivant (above) and Gazelle Sports are B Corps and are working with Local First to help other companies become certified.

*Thriving Businesses Happens Here*

Grantee: Local First
Amount: \$200,000

The project: Local First is working with more than 30 local businesses interested in being more socially and environmentally responsible. Local First is piloting a short form of the B Corps (benefit corporations) assessment tool to help business owners gauge whether they're ready to apply for certification. B Corps aim to do business as a force for good. Certification helps businesses adhere to and improve the triple bottom line of social, economic and environmental impact. The program also provides a forum and network for B Corps to learn from each other.

Why it matters: "At Local First, we believe that local business has the power to positively transform our community—not only by creating jobs—but also by innovating within our place. We're pleased that Grand Rapids Community Foundation will partner with local entrepreneurs as they continue to pioneer programs and create cultures that support healthy living and lead change within the community," said Elissa Hillary, Local First executive director.

West Michigan is home to several certified B Corps, including Cascade Engineering, Brewery Vivant, Gazelle Sports and Better Way Imports. Gazelle Sports became certified as a B Corp in August 2013. "We wanted to measure our focus on employees, community and environment with a methodology that had been used by others and was standardized. This way, we could really see where we could improve," said Chris Lampen-Crowell, Gazelle Sports co-owner.

Achieving B Corp status isn't the end of the race. "We're investing to improve our company's energy use and work with our landlords. We are bringing the language of sustainability into our culture and are having fun supporting our staff efforts," he said. At a Local First gathering, he learned about Brewery Vivant's employee incentive program and created a similar one for Gazelle staff.

Why this is a great grant: "Local First has demonstrated that purchasing locally keeps more money in the local economy and benefits everyone in the community. They hope to generate movement toward socially and environmentally responsible, profitable businesses by providing tools and resources for businesses to assess themselves and make operational changes. The result will be better for the environment, employees and the community as a whole."

—Laurie Craft
Program Director, Grand Rapids Community Foundation

Innovation Happens Here

Grantee: Grand Rapids Symphony
Amount: \$35,000

The project: Like many symphony orchestras across the United States, Grand Rapids Symphony knows its future depends on being relevant to younger and more diverse audiences. The symphony used its Community Foundation grant for professional audience research and data collection. Findings led the symphony to diversify its concert content, venues and guest performing artists—so it can attract new audiences while maintaining devoted patrons.

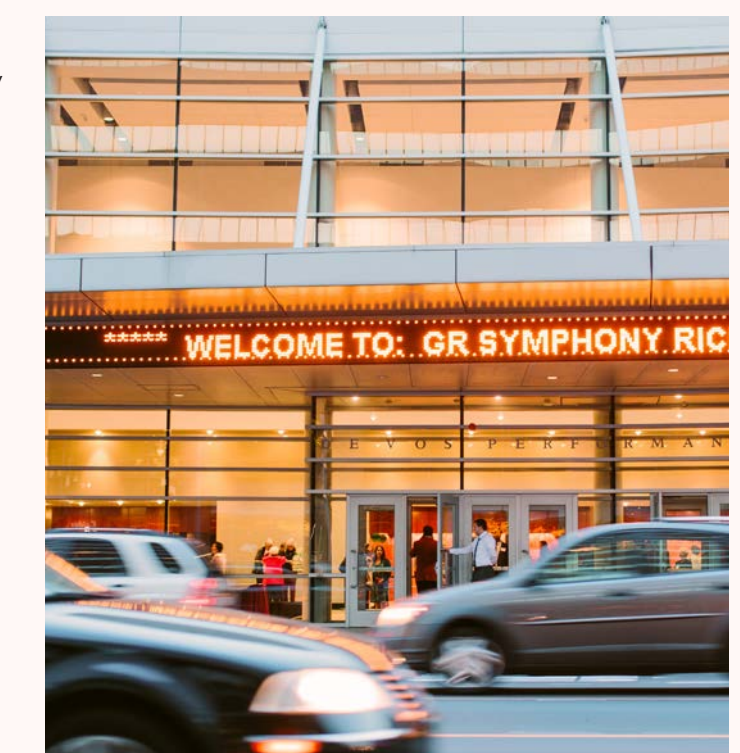
Why it matters: "Although the symphony believed that new marketing strategies could increase ticket revenue and engage broader concert audiences, reliable market research was needed to support innovative planning," said Tim Liang, co-chair of the symphony's marketing committee. "The Grand Rapids Symphony Audience Development Initiative grant award was used for market research and gave the symphony's patrons a voice." When the research was complete, over 1,800 active customers, as well as those unfamiliar with the orchestra, shared their opinions, ideas and comments. These insights are a blueprint for seven innovative marketing strategies which included:

- Rebranding Pops programming
- Retaining a principal Pops conductor
- Creating a mobile site and smartphone app
- Acquiring a customer relationship management system and ticket sales forecasting/planning software
- Enhancing institutional communications and regional branding
- Establishing arts access to engage new audiences
- Revising program books format and content

"Each strategy is funding opportunity designed to underwrite changes and innovations. Development committee members and staff are finding the resources needed to implement new plans. The results? Stronger revenue (from tickets and donations) as well as larger audiences, including new patrons," Liang said.

Why this is a great grant: "It is critical for arts institutions across the country to use different approaches to engage new generations. The Grand Rapids Symphony board and staff are using research and data to ensure that this treasure engages and delights their current fans—and embraces new audiences, volunteers and donors. Our \$35,000 investment in this work will result in a relevant, exciting and inclusive mainstay of our cultural scene."

—Marcia Rapp
Vice President of Programs, Grand Rapids Community Foundation



"Community Garden"

Ed Wong Ligda's allegorical painting commissioned for Grand Rapids Community Foundation is replete with ideas and meaning hidden in ordinary objects.

The metaphor of a community garden shows people working together to create something significant for the future. This idea reinforces the concept that

the Community Foundation is centered on growth, prosperity, neighborhoods, health and diversity. The three seasons shown in the painting and the activities of

preparing, planting and harvesting represent donor gifts, market growth and grantmaking at the Community Foundation. In his signature style, the artist made

almost every object in this painting with a hidden meaning and purpose. For instance, the foxglove plant near the lower left corner is used to make a heart medicine.

Lee Hutchins, the founder of the Community Foundation, who is kneeling in the center of the painting, worked in the pharmaceutical business, thus the medicinal plant.

The colorful tulips, crocus, clover, marigolds and sunflowers are flowers that people might see in a typical West Michigan garden. The skyline of Grand Rapids should look familiar

to viewers, but notice, it has been rearranged to suit the artist's eye. There are five species of birds in the painting: hummingbird, geese, chickadee, robin and cardinal. The

path of the garden is paved with pebbles so it can be wheelchair accessible, and the orange bucket and blue wheelbarrow are painted in the logo colors of two grantees,

the Community Media Center and Home Repair Services. The painting is located in the lobby of the Community Foundation offices at 185 Oakes Street SW.



METZ LEGACY SOCIETY

Members of the Metz Legacy Society are donors who have made a provision including the Community Foundation in their estate plan. The types of provisions vary and are generally created with help from an estate planning attorney. Gift types that we've received (or have been promised) from Metz Legacy Society members include retirement assets such as an IRA, specific dollar amounts in a will, a percentage of the estate, life insurance policies, charitable gift annuities, charitable remainder trusts, Health Savings Account proceeds and gifts of property. Donors may specify how a gift will be used in the future or simply direct their contribution to the Fund for Community Good. There are many options to consider, and we'd be happy to talk with you and your professional advisor. For more information, contact Marilyn Zack, Vice President of Development, at 616.454.1751 x 127.

A
Ms. Mary Abbott
Mr. William E. Alt
Gasper J. Amodeo
Mark and Wendy Anderson
Anonymous (7)
Mr. Willem Antonides
Mr. and Mrs. Noyes Avery

B
Janet R. Bacon
Ken Bandstra
John H. and Nancy Batts
Mr. and Mrs. Roger W. Bauer
Laurie Finney Beard
Mr. and Mrs. Robert H. Becker
Lois Eberhard Beckering
Tanya and Tom Berg
Mr. and Mrs. Kenneth Bergsma
John R. Bertsch
Kristine Bishop
John and Claire Bissell
Marjorie W. Bjork
Lynne Black
Ms. Bonnie L. Blandford
Thomas N. Blandford
Glen and Betsy Borre
Todd and Gina Bovee
Mr. and Mrs. Paul D. Bowers, Jr.
Mary Bowman
Janet and John Boyles
Tom Braciak
Mr. and Mrs. Laurence L. Bratschie
The Honorable Hugh W. Brenneman, Jr.
Mrs. Richard F. Brush
Mr. Renwick Brutus
Mrs. Gretchen B. Burch
Robert and Sandy Burnham
Charitable Fund
Jan Burns
Anna Moore Butzner
Sharon M. Buursma
John and Linda Byington

C
Dr. and Mrs. Mark Campbell
John and Marie Canepa
David M. and Cara V. Cassard
Olga Cassard
Ms. Libby Child
Brian Cloyd and Agnes Kempker-Cloyd
George Cope
Mr. and Mrs. Ronald L. Cornet
Bill and Marilyn Crawford
Mal Cumming
Tom Czerny
Thomas and Gale Czerwinski

Beth Goebel
Gary Goode
Mr. and Mrs. Philip W. Goodspeed
Ms. Carol Greenburg
Ms. Dareather Greer
Franklin K. Gregory
David and Marianne Grooters
Dr. James and Patty Gunn

H
Terri Handlin
Mr. and Mrs. William H. Hardy, Jr.
Jacqueline E. Haveman
Janet A. Haynes
Jan Heerspink
Mr. and Mrs. James Hegarty
Mr. and Mrs. William R. Heyne
John and Gwen Hibbard
Bert Pettis and Gary Hill
Jean and David Hitchcock
Barbara J. Hoag
Dirk Hoffius
Michael Hoffman
Jane Hondelink
Robert L. and Judith S. Hooker
David Horning
Gregg and Kim Hughes
The Reverend Mary S. Hulst
Katherine Humphrey
Ms. Bonnie Hunter
John Hunting

D
Thomas C. and M. Lynn Dandridge
John and Edy Davies
Gilbert R. and Patricia K. Davis
Norman B. and Mary M. De Graaf
Wesley and Amy De Vries
Joy and Jim DeBoer
Barbara DeMoor
Bill and Carolyn DeNeut
David R. and Helene M. Despres
Rick and Sue DeVries
Mr. and Mrs. Phillip DeWildt
Gail DeYoung and F. Jay Schoettley
Mr. Max Doering
Elizabeth T. (Mrs. Carson) Donley
Mr. and Mrs. Lawrence E. Dooge, Jr.
Beth Dornan
Mr. and Mrs. Ronald L. Ducharme
Mr. Robert J. Dunlap
Ms. Patricia S. Duthler
David G. Dvorak, M.D.

J
Sue Ann Jabin
Mr. and Mrs. Phillip Jacobus
Don and Lois Jandernoa
Chuck and Carol Jennings
Calvin Jeter
Lynne Jarman Johnson and Robert J. Johnson
Tom and Margy Jones

E
Mr. and Mrs. Kenton H. Eavey
Mr. and Mrs. Jay Egan
Ben and Susan Emdin
Ms. Elaine E. Emmons
Todd and Gina Bovee
Mr. and Mrs. Paul D. Bowers, Jr.
Mary Bowman
Janet and John Boyles
Tom Braciak
Mr. and Mrs. Laurence L. Bratschie
The Honorable Hugh W. Brenneman, Jr.
Mrs. Richard F. Brush
Mr. Renwick Brutus
Mrs. Gretchen B. Burch
Robert and Sandy Burnham
Charitable Fund
Jan Burns
Anna Moore Butzner
Sharon M. Buursma
John and Linda Byington

F
Hank and Marcia Fairchild
Mr. and Mrs. Anthony Farage
Mr. and Mrs. Thomas Finazzi
Michael Finton Ph.D.
Mary and Bill Ford
Dr. Anthony Foster and Mrs. Linda Nemeč Foster
Mrs. John H. Foster, II
Mr. and Mrs. Ben A. Fowler
David E. and Dawn O. Fowler
Thomas S. and Maxine J. Fox
Jeffrey and Sheila Frank
Mr. Donald H. Freeman
Ruth Freeman
Susan S. Freihofer
Ellie Frey Zagel
Mary Meade Fuger
Mr. Henry G. Fuhs
Michael and Elyce Fuller
B. Kenneth Larm
Mr. Claire R. and Mrs. Debra G. Larson
Dr. Sandra Last
R. Lawrence and Marilyn Leigh
Harvey Lemmen
Mr. and Mrs. Wayne Lemmen
Norm and Marilyn Leven
Mike Lloyd
Arend and Nancy Lubbers
Dr. Jack Lukens
Jan Lunquist and Michael May
Mr. and Mrs. Eugene G. Lyons

L
Mrs. Paula La Claire
Betty Ladd Andre
Jeff Schad and Marilyn Lankfer
B. Kenneth Larm
Mr. Claire R. and Mrs. Debra G. Larson
Dr. Sandra Last
R. Lawrence and Marilyn Leigh
Harvey Lemmen
Mr. and Mrs. Wayne Lemmen
Norm and Marilyn Leven
Mike Lloyd
Arend and Nancy Lubbers
Dr. Jack Lukens
Jan Lunquist and Michael May
Mr. and Mrs. Eugene G. Lyons

M
Donald W. Maine
Ernest and Lorraine Malkewitz
Frank and Nancy Manning
Barbara P. Marcus
Ronald Marsteiner
Inetta Martindill
Chet Maternowski
Max B. Matteson
Kate and John McGarry
Bonnie K. Miller
Kim S. Mitchell
Ronald and Karen Modreski
Gordie and Jan Moeller
David and Diana Morgenstern
Rosemary D. Murphy
Chief Judge Bill and Paula Murphy
Jon and Carol Muth

N
Ms. Paula Neal
Ardith V. Neath Adams
Mr. and Mrs. Bradley D. Nelson
Dale C. and Cynthia Dewees Nelson
Ms. Pat Nevala
Mr. Alger J. Nielsen and Mrs. Nancy P. Kehoe Nielsen
Gary and Peg Novosad

O
Mrs. Samuel Oates
Fred Olert, Jr.
Ms. Norma Olsen
Mr. Gerald Olson
Mr. Armen G. Oumedian

P
Molly and Steve Parker
Richard A. Perkins
Cynthia Pimm
Mr. John H. Pimm, Sr.
Dr. and Mrs. James E. Ponitz
Jim and Marie Preston
Mr. and Mrs. Michael H. Price
Mr. and Mrs. Larry Purcey

R
Marcia L. Rapp
Mr. and Mrs. Fred P. Keller
Paul and Beth Kelly
Roberta F. King
Ms. Birgit Klohs
Herbert and Glenna Knappe
Raymond E. Knappe
Mr. Alvin Koop and Mrs. Robin A. Horder-Koop
Mary C. Roth
Bob and Marcy Roth
Owen Rottschäfer, M.D.
Charles and Stella Royce
Ms. Kathleen M. Russell
Margaret Ryan

S
Jerry Schaefer and Polly Hewitt
Robert W. Schellenberg
Mr. and Mrs. Craig W. Schopf
Gladys Schuil
Ms. Greta Schuil
Ms. Corliss E. Scott
Mr. and Mrs. James R. Sebastian, Jr.
Peter and Joan Secchia
Mrs. Elaine Shay

Martin Shedleski Family
Marilyn and Budge Sherwood
Diana R. Sieger
Ms. Maureen Quinn Slade
Mr. and Mrs. Gary R. Snyder
Robert A. Sprotte
Amanda and Ryan St. Pierre
Terrence M. Start
Barbara D. Steil
Stan and Norma Sterk
Wendy Stock
Ms. Patty A. Story
Ms. Ann Stuart Burroughs

T
Michael and Susan Taylor
Steele and Mary Taylor
Jill and Art Tiefenbach
Mrs. Shirley J. Tillyer
Ms. Patricia H. Timmer
Ella M. Topp
Mr. and Mrs. Daniel Trapp
George and Kerstin Trowbridge

U
Dr. and Mrs. Ghayas Uddin

V
Selene Van Vleck
Mr. Don VandenBos, Jr.
Mrs. Herbert Vander Mey
Lorrie and Dave VanderArk
Mr. Lou VanderHave
Mr. and Mrs. Rick A. VanHorn
Ms. Robin E. Velte
John P. and Lynn Vinkemulder
Phil and Kathleen Vogelsang
Theodore J. Vogt
Mrs. Cecil S. Vorenkamp

W
David and Kay Wagner
Gary R. and Janice M. Walker
Anita Walgren
Mr. and Mrs. Russel Warner
Dr. and Mrs. James K. Watkins
Dixie Wege
Ms. Connie Wenger
John Wert
Mary White
John and Dorothy Wiest
Rita Williams and John Gill
Jim and Connie Winter-Troutwine
Mr. Thomas D. Wisnom
Mike and Colleen Wolfe
Kate Pew Wolters
Dr. Richard J. Woltersom
Bob and Aleicia Woodrick
John S. and Kathleen B. Woudstra

In memory of:
Shirley K. Daniels
Susan Deane
John H. Foster
Roger Gietzen
Doris G. Hall
Michael Handlin
Virginia Harley
Madeline Hsu
Matthew Kutsche
Bill McIntyre
Patricia Mendel
Wayne Moon
Lorraine Ohanesian
Kathleen (Rasch) Pavlovic
Betty Jane Pletcher
Nancy Porter

Z
Marilyn and Garrett Zack
Mr. and Mrs. John H. Zwarensteyn
Rev. David Baak and Betty Zylstra
Robert Zylstra and Gayla Jewell

REALIZED PLANNED GIFTS

Each year people who have passed away leave gifts to Grand Rapids Community Foundation through their estates. As estates are settled, we receive the thoughtful gifts from these people and are thankful for their planning and foresight.

Charlene "Bebe" Glerum
Leonard and Eileen Newman
Mr. Edgar Orr
Estate of Jackman and Helen Palmatier
John S. Pridgeon
Alan Ryan
Jill and Art Tiefenbach
Ruth B. Stewart
William K. Van't Hof
Dorothy J. Thurston
Janice K. Treaster
Mrs. Barbara Whittenberger

HONOR AND MEMORIAL DONATIONS

During the 2013-2014 fiscal year, Grand Rapids Community Foundation received numerous gifts in honor or in memory of the following people.

In honor of:
Christy Buck
Stanley C. Burns
Benoni de Oliveira
Pamela Dion
Judge Patricia Gardner
Jim Hackett
Janet Haynes
Phyl Hedgpath
Char Hill
Dirk Hoffius
Christina L. Keller
Armen Oumedian
David Schroeder
Diana Sieger
Teachers
Jim White
Meg Willit

In memory of:
Shirley K. Daniels
Susan Deane
John H. Foster
Roger Gietzen
Doris G. Hall
Michael Handlin
Virginia Harley
Madeline Hsu
Matthew Kutsche
Bill McIntyre
Patricia Mendel
Wayne Moon
Lorraine Ohanesian
Kathleen (Rasch) Pavlovic
Betty Jane Pletcher
Nancy Porter

GRANTS & SCHOLARSHIPS

Grand Rapids Community Foundation makes competitive grants to nonprofits that help achieve our specific community leadership goals. These goals include education, arts and social engagement, the environment, health, neighborhoods and economic prosperity. The Community Foundation is Kent County's largest provider of college scholarships, and this year we awarded more than \$1 million in awards to deserving students seeking to further their education.

*Total Grants & Scholarships awarded: \$10,673,454
2,167 scholarship applications were submitted for consideration, and 642 scholarships were awarded.*

July 1, 2013, to June 30, 2014

This list includes organizations that received a competitive grant award from the Community Foundation's Fund for Community Good, Field of Interest and designated funds.

Aquinas College
ArtPrize
Belding Area Schools-School Service Fund
Bethany Christian Services
Boy Scouts of America,
Gerald R. Ford Council
Boys and Girls Clubs of Grand Rapids Youth Commonwealth
Camp Bloodgett
Camp Henry c/o Westminster Presbyterian Church
Camp Roger
Camp Shout Out
Camp Tall Turf
Cascade Community Foundation
Center for Community Leadership
CF Insights/FSG, Inc.
CF Leads
Challenge Scholars Program
Comprehensive Therapy Center
Comprenew
Council of Michigan Foundations
Council on Foundations
DA Bloodgett-St. John's Family Futures
Flat River Outreach Ministries, Inc.
Frederick Meijer Gardens & Sculpture Foundation
Friends of Grand Rapids Parks
Gilda's Club Grand Rapids
Girl Scouts of Michigan Shore
Kate Pew Wolters
Girls Choral Academy
Goodwill Industries of Greater Grand Rapids
Grand Action Foundation
Grand Rapids Art Museum
Grand Rapids, City of
Grand Rapids Public Schools
Grand Rapids Student
Grand Rapids Track Club
Grand Rapids Urban League Inc
Grand Valley State University
Greater Lowell Chamber Foundation
GVSU-Dorothy A. Johnson Center for Philanthropy
Habitat for Humanity of Kent County
Health Intervention Services
Heart of West Michigan United Way
Hispanic Center of Western Michigan

Indian Trails Camp
John F. Kennedy Center for Performing Arts
Jubilee Jobs
Kent Intermediate School District
Lincoln Lake Baptist Youth Camp, Inc.
Local First Educational Foundation
Meet Grand Rapids
Michawana Youth Camp
Michigan League of Conservation Voters Education Fund
Muscular Dystrophy Association of GR
Muskegon Family of YMCA Camp Pandalouan
National Wildlife Federation
New City Neighbors
Opportunities Unlimited for the Blind
Partners for a Racism-free Community
Planned Parenthood of West and Northern Michigan
Project C.O.O.L.
Schrems West Michigan Trout Unlimited
Spectrum Health Foundation
Spring Hill Camps
Steepletown Neighborhood Services, Inc.
The Other Way Ministries
The Edge Urban Fellowship
Trout Unlimited, Inc.
True North Community Services
Urban Institute for Contemporary Arts
Wedgwood Christian Services
West Michigan Trails and Greenways Coalition
Women's Resource Center
YMCA Camp Manitou-Lin
YMCA of Greater Grand Rapids

Lowell Area Community Fund
Lowell, City of
Flat River Outreach Ministries, Inc.
Gilda's Club Grand Rapids
Greater Lowell Chamber Foundation
Kent County Parks Department

GRANTS FROM COMMUNITY FUNDS HELD AT GRAND RAPIDS COMMUNITY FOUNDATION

Hudsonville-Jenison Community Fund
Barnabas Ministries, Inc.*
Friends of the Gary Byker Memorial Library of Hudsonville
HUGS for Horses & Children
Youth Ranch
Patmos Library

Ionia County Community Fund

Friends of Fred Meijer River Valley Rail-Trails
Ionia, City of
Ionia County Economic Alliance
Ionia County Intermediate School District
Ionia County Intermediate School District*
Ionia Public Schools*
Jordan Lake Trail Board
Manna's Market
Portland District Library
Portland Public Schools
Remembrance Ranch*
Saranac Community Schools*
Saranac Public Library
Zion United Methodist Church

Lowell Area Community Fund
Lowell, City of
Flat River Outreach Ministries, Inc.
Gilda's Club Grand Rapids
Greater Lowell Chamber Foundation
Kent County Parks Department

COMMITTEES

We especially thank all the people who served on one of Grand Rapids Community Foundation's committees. We are grateful for your dedication, support and gifts of time and expertise. You can find all of our committees online at grfoundation.org.

ADVISORY COUNCIL

Mike Mraz, Chair
Christina Arnold
Craig Clark
Kurt Dietsch
Brent Geers
Cassandra Hayes
Jeff Hill
Sonya Hughes
Joe Jones
Allison Lugo Knapp
Minnie Morey
Matt Osterhaven
José Reyna
Ryan Slusarzyk
Julieta Tablante-Blanco
Eddie Tadlock
Caitlin Townsend Lamb
Beverly Wall
Shaun Shira, staff

GRAND RAPIDS COMMUNITY FOUNDATION YOUTH GRANT COMMITTEE AWARDS
Artists Creating Together
Bethany Christian Services
Bridge Street House of Prayer
Calvin College
DA Bloodgett-St. John's
Grand Rapids Creative Youth Center
Grand Rapids Track Club
Grandville Avenue Arts & Humanities, Inc.
Harrison Park School
Junior Achievement of Michigan Great Lakes
OLHSA
Urban Institute for Contemporary Arts

Kent County Youth Agricultural Association
Lowell Area Arts Council
Lowell Area Fire & Emergency Services Authority
Lowell Area Historical Museum
Lowell Area Schools
Lowell Area Schools Education Foundation
Lowell Chamber Foundation
Lowell Community Wellness
Senior Neighbors, Inc.
YMCA of Greater Grand Rapids

Sparta Community Fund

Feeding America West Michigan
Junior Achievement of Michigan Great Lakes
Lily's Frog Pad, Inc.
North Kent Community Services (previously NK Service Center)
Sparta Cooperative Preschool
Sparta Township
Sparta Area Schools*

Wyoming Community Fund
Children's Assessment Center
John Knox Presbyterian Church*
Kent District Library
Kids' Food Basket*
Thrive: A Refugee Support Program
United Church Outreach Ministry
Wyoming, City of*

*also awarded a grant from a Youth Grant Committee Fund

In addition to grants listed here, our Donor Advised Funds made \$4,309,948 in grants, and Agency Endowments and Designated Funds totaled \$1,023,183.

LGBT FUND CAMPAIGN

Stephen Conway
Sue Conway
Lisa Costanza
Jill May
Andrew Milauckas
Shelley Padnos
Dottie Rhodes
Leandro Robles
Carol Sarosik
Kate Pew Wolters
Marilyn Zack, staff
Roberta King, staff

PROGRAM RELATED INVESTMENT

Luis Avila
Thomas Dandridge
Rob Dwortz
Christina Keller*
Patrick Lonergan
Bonnie Miller
Carlos Sanchez*
Laurie Craft, staff

AFRICAN AMERICAN HERITAGE FUND

Christina Arnold
Paul Doyle
Beverly Drake
Ellen James
Joe Jones
Alice Kennedy
Elias Lumpkins
Linda McCarter
Raquelle Millbrooks*
Lauri Parks
José Reyna
Carlos Sanchez*
Bessie Ward
Austin Young
Jonse Young, staff

YOUTH GRANT

Amani Allen
Nathan Baker
Kate Blumenstein
Max Boorsma
Preston Boorsma
Imani Brigham
Erin Brom
Cassie Christian
Hannah Creasey
Adriana Cross
Yvonne Danko
Kate Dann
Lynne Black, staff
Kevin Harmelink, staff
Diana Sieger, staff

COMMUNITY ACTION

Jeanne Arnold
Laurie Beard*
Wayman Britt*
George Davis
Sean Huddleston
Paul Keep*
Emily Loeks
Allison Lugo Knapp
Dottie Rhodes
Rick Treur
Laurie Craft, staff
Shavon Doyle-Schmid, staff
Kate Luckert-Schmid, staff
Marcia Rapp, staff

* Trustee
Myles McCurdy
Raquelle Millbrooks
Khaysirah Muhammad Smith
Ebony Pratt
Meaghan Race
Desmond Smith
Lexie Sweat
Kaela Theut
Alondra Vergara-Diaz*
Aaron Williams
Austin Young
Cris Kutzli, staff

This has been a great year financially for the Community Foundation, with gift revenue of \$16.7 million, investment returns of \$42 million and total assets just shy of \$330 million.

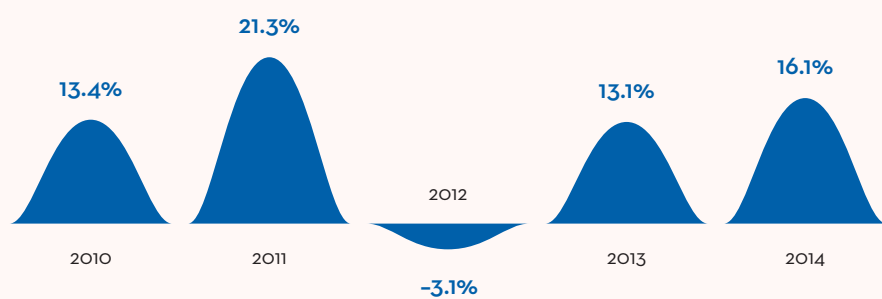
Providing much of our growth in assets were the returns on our main endowed pool. Annualized returns, net of fees, were 16.1 percent for one year, 8.6 percent for three years and 11.9 percent for five years. The overall goal of the endowed pool is to maintain purchasing power over time. In order to accomplish this, the Investment Review Committee's long-term goal is for net rate of return on investments to be 8.0 percent to 8.5 percent (5 percent for spending and the

balance to cover inflation). Returns for the last five years have not only met this goal but exceeded it, so funds now have a buffer in place should the market go the other direction.

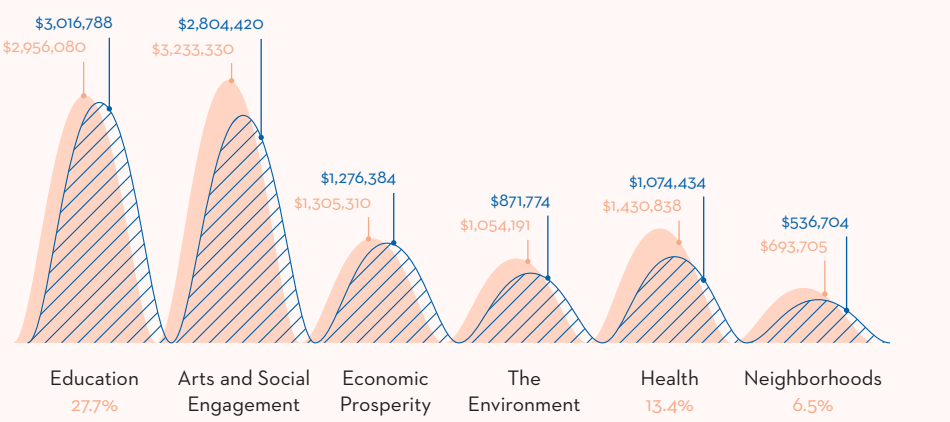
While the Community Foundation feels that for long-term growth the main pool (Balanced Pool Plus) is the best vehicle for investments, and it is where we invest our endowed funds, we also understand that donors want additional options. After a great deal of research, the Foundation rolled out two new investment pools this fiscal year: a Balanced Pool that does not include exposure to alternatives and a Socially Responsible Investment Pool which considers both financial and social good. Both pools are invested in mutual funds and providing solid returns.

All Grand Rapids Community Foundation portfolios are under the direct oversight of the Investment Review Committee (IRC), whose members have been selected for their investment expertise. Staff and the IRC are responsible for recommending asset allocation parameters, choosing best-in-class managers and monitoring performance. The IRC reports to the Board of Trustees on a quarterly basis and uses a national firm to help manage the portfolio. Members of the IRC are listed on page 15.

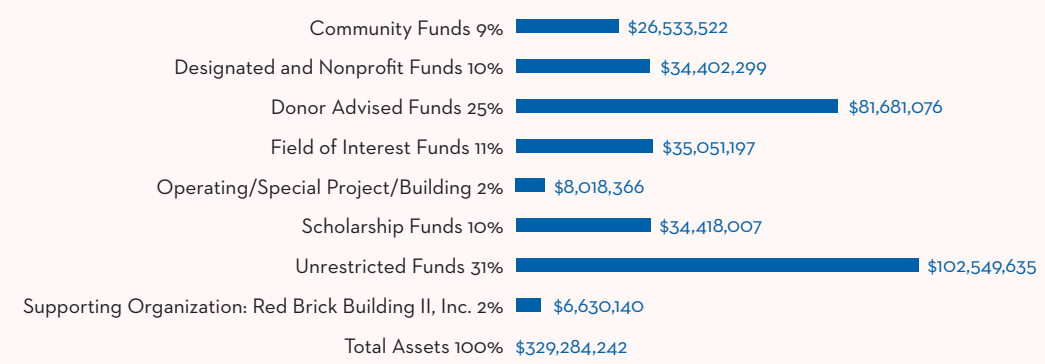
Net Annual Returns of Main Pool as of June 30



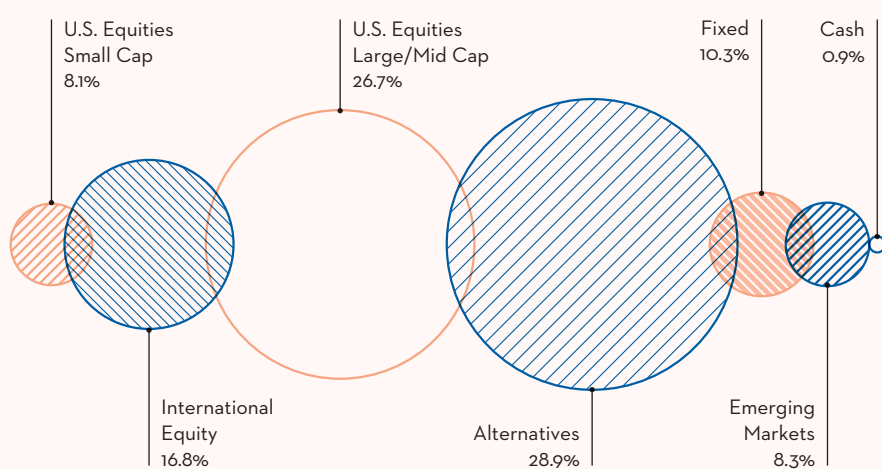
Grants Authorized and Paid



Assets by Fund Type



Asset Allocation as of June 30, 2014, of Balanced Plus Pool



Statements Of Financial Position, June 30

ASSETS	2014	2013
Cash and Investments, at Market Value	\$304,130,329	\$262,662,396
Beneficial Interests in Perpetual Trusts	\$2,500,490	\$2,319,247
Split-Interest Agreements Receivable	\$3,558,555	\$3,813,924
Gifts and Pledges Receivables	\$9,355,793	\$8,160,136
Notes Receivable	\$2,966,968	\$1,404,249
Property, Furniture and Equipment, Net of Accum. Dep.	\$4,400,809	\$4,593,526
Prepaid Expenses	\$4,148	\$10,529
Reinsurance Contracts	\$1,644,747	\$1,899,144
Cash Surrender Value of Life Insurance	\$579,650	\$544,609
Financing Costs	\$142,753	\$197,618
Total Assets	\$329,284,242	\$285,605,378
LIABILITIES AND NET ASSETS		
LIABILITIES		
Grants and Scholarships Payable	\$4,729,370	\$3,418,610
Long-term Debt	\$4,000,000	\$4,000,000
Charitable Gift Annuities Payable	\$2,429,565	\$2,892,417
Funds Held on Behalf of Nonprofit Endowments	\$14,475,993	\$12,765,504
Total Liabilities	\$25,643,928	\$23,076,537
NET ASSETS		
Unrestricted:		
Board Designated Endowment	\$256,435,136	\$220,922,011
Undesignated	\$17,282,662	\$8,063,178
Temporarily Restricted	\$22,962,812	\$21,791,548
Permanently Restricted	\$6,968,704	\$5,372,110
Total Net Assets	\$303,649,314	\$262,528,847
Total Liabilities and Net Assets	\$329,284,242	\$285,605,378

Statements Of Activities, Year Ended June 30

REVENUES AND GAINS/(LOSSES) AND OTHER SUPPORT	2014	2013
Investment Income net of investment expenses	\$3,734,617	\$3,573,859
(Net of investment expenses of \$1,020,420 in 2014 and \$964,723 in 2013)		
Realized Gains/(Losses) on Sale of Investments	\$8,984,583	\$8,153,097
Change in Fair Value of Investments	\$28,486,905	\$18,407,735
Bequests and Gifts	\$16,679,715	\$18,844,590
Change in Fair Value of Charitable Gift Annuities	\$57,281	(\$218,544)
Change in Fair Value of Split-Interest Agreements	\$119,112	\$360,408
Fee for Services	\$0	\$115,505
Less: Amounts Allocable to Nonprofits	(\$2,204,352)	(\$1,745,127)
Total Revenues and Gains/(Losses)	\$55,857,861	\$47,491,523
EXPENSES		
Grants and Scholarships Authorized	\$10,673,454	\$7,913,276
Charitable and Philanthropic Expenses	\$1,286,160	\$1,267,728
Community Initiatives and Fund Program Expenses	\$673,335	\$505,309
Less: Amounts Allocable to Nonprofits	(\$493,865)	(\$386,533)
Supporting Services:		
Management and General	\$908,362	\$908,122
Development and Marketing	\$1,260,430	\$1,111,604
Fund Management	\$69,731	\$85,523
Property Management*	\$359,785	\$365,791
Total Expenses	\$14,737,394	\$11,770,820
Change in Net Assets	\$41,120,467	\$35,720,703
Net Assets, Beginning of Year	\$262,528,847	\$226,808,144
Net Assets, End of Year	\$303,649,314	\$262,528,847

* Property management represents expenses paid by our supporting organization, Red Brick Building II, which owns our building and was established to utilize New Markets Tax Credit financing. The financing term is seven years and in 2015 will end. Expenses recorded are interest on loan, depreciation, financing amortization and miscellaneous professional fees.

Audited financials have been given an unqualified opinion by our auditors Plante & Moran PLLC. If you would like a copy of the full audit, please call Grand Rapids Community Foundation at 616.454.7151 or visit our website www.grfoundation.org.

Analysis of Expenses: 18% Support Services as a percentage of total expenses, 82% Community Leadership and Grants as a percentage of total expenses.

LEADERSHIP & STAFF

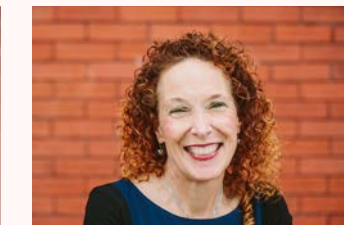
2013/2014



Diana Sieger
President



Lynne Black
Vice President, Finance & Administration



Roberta King, APR
Vice President, PR & Marketing



Marcia Rapp
Vice President, Programs



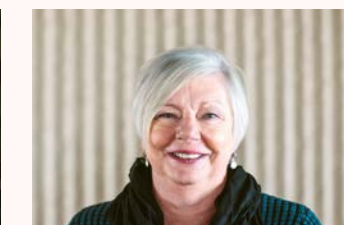
Marilyn Zack
Vice President, Development



Gina Bovee
Challenge Scholars Co-Director, Resource Development & Administration



Jan Burns
Administrative Assistant: Special Events



Ruth Bishop
Education Program Officer



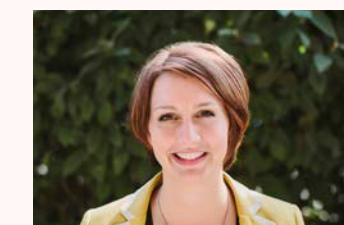
Laurie Craft
Program Director



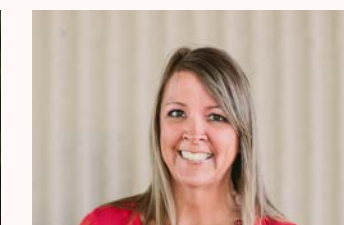
Shavon Doyle-Holton
Grants Management Assistant



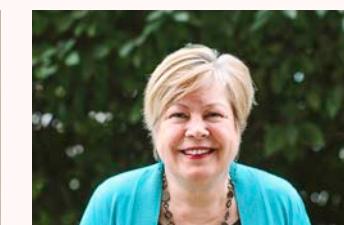
Jason England
Receptionist



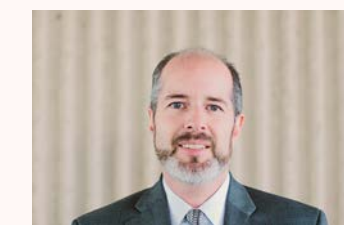
Meredith Fennema
PR & Marketing Specialist



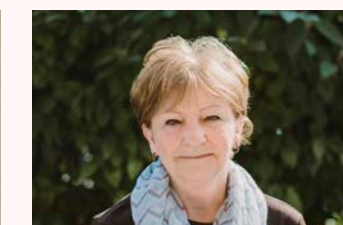
Barb Forseman
Operations Associate



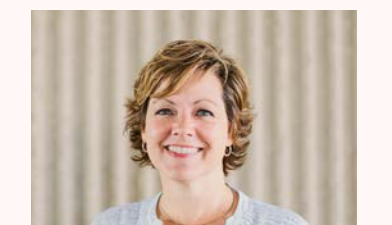
Rená Guttrich
Executive Assistant



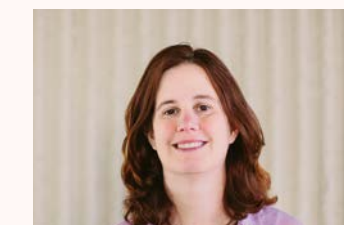
Kevin Harmelink
Controller



Mary Karrip
Administrative Assistant: Development



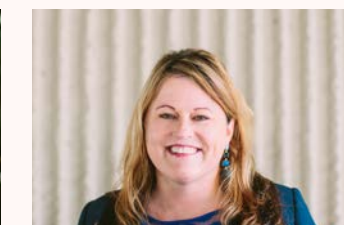
Cris Kutzli
Challenge Scholars Co-Director, Program & Evaluation



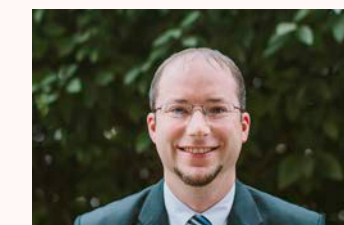
Kate Luckert Schmid
Program Director



Ben Oliver
Challenge Scholars Advisor



Ann Puckett
IT Manager



Shaun Shira
Development Officer



Amanda St. Pierre, APR
Philanthropic Services Specialist



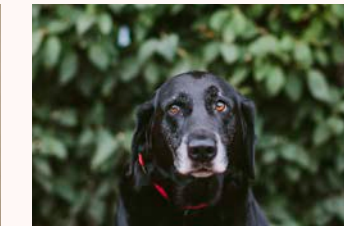
Jill Tiefenbach
Administrative Assistant: Education & Leadership



Tracy Van Solkema
Campaign & Research Associate



Jonse Young
Philanthropic Services Director



Max Guttrich
Office Dog

BOARD OF TRUSTEES



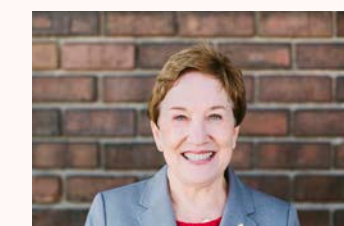
Wayman P. Britt
Chair, Assistant County Administrator, Kent County Administration



Paul M. Keep
Vice Chair, Director of Print, MLive Media Group



Robert W. Roth
Immediate Past Chair, President and CEO Ro-Man Manufacturing



Laurie Finney Beard
President & CEO, Founders Bank & Trust



Eva Aguirre Cooper
Director of Community Affairs, WOOD TV8



Carol J. Karr
Retired, Miller Johnson



Christina L. Keller
President, CK Technologies



Arend D. Lubbers
President Emeritus, Grand Valley State University



Michael G. Rosloniec
Family Wealth/Institutional Consulting Director, Graystone Consulting



Carlos Sanchez
Director, Ferris State University-Latino Business and Economic Development Center



E. Miles Wilson
Consultant

Alondra Vergara-Diaz
Student, City High Middle School

Term ended December 31, 2013
Cecile Cave Fehsenfeld
President, Schuler Books & Music

Mission

Our mission is to build and manage our community's permanent endowment and lead the community to strengthen the lives of its people.

Vision

We envision a magnetic and interconnected West Michigan community.

Diversity Vision Statement

With intention and honesty, Grand Rapids Community Foundation offers a safe environment that values diversity and fosters inclusion.

We recognize the injustice caused by racism and commit ourselves to eliminating it in all forms.

Values

Integrity, Excellence, Inclusion, Sustainability, Bold Aspirations.

Grand Rapids

Growing community since 1922

Indeed, Grand Rapids, Kent County and all of West Michigan is a special place. We've long recognized that we are part of a growing and diverse community—a place where all people matter and everyone is welcome. But creating a welcoming community doesn't just happen. It takes effort and intention. This year Grand Rapids Community Foundation took a bold step toward creating a more diverse and inclusive community. In our discretionary grantmaking, we now ask our grantees to affirm that throughout their organization:

No person is excluded from organization services, employment or volunteer participation due to discriminatory reasons including age, disability, economic circumstance, race, ethnicity, gender, gender identity or expression, sexual orientation, worldview, spiritual beliefs, marital status, national origin or veteran status. We also expect that each organization strives to intentionally increase inclusive practices and incorporate diversity throughout its mission, governance board, staff, volunteers, vendors and constituents.

We practice this, too, at the Community Foundation in our work and relationships.

We honor our 2013-2014 grantees for walking with us. The journey to becoming inclusive isn't easy, and some decisions around this issue make people uncomfortable, even angry. Yet we believe that our community's growth and future depend on creating a place where all people feel welcome. Expanding this welcome is the right thing to do.



How to apply for a grant

Grants are awarded six times per year after review by program staff, the Community Action Committee and approval by the Board of Trustees. Pre-applications and grant proposals are accepted throughout the year. Minimally, grant applicants must serve people in Kent County, have IRS 501 (c) (3) designation and work in the areas of education, arts and social engagement, the environment, health, neighborhoods and economic prosperity. Our guidelines detail other criteria for funding consideration. To learn more about submitting a pre-application or applying for a grant, please visit the Community Foundation online at www.grfoundation.org or call 616.454.1751.

Gifts, Growth, Grants and Leadership

About our Community Foundation:

Grand Rapids Community Foundation is Michigan's oldest community foundation and has been Kent County's leading source of philanthropic funds for nearly a century. The grants we awarded last year were made possible by financial gifts from donors—people who care about Kent County and want to see it thrive. Our \$329 million endowment relies on donor gifts and market growth for its success. A long-term investment strategy guided our allocation of assets. We made \$10.7 million in grants in five priority areas: education, arts and social engagement, the environment, health, neighborhoods and economic prosperity. We lead by bringing people together to solve complicated community problems, realizing that, for some issues, there are no immediate solutions or simple answers. We've been here since 1922, we are here with you now, and we're confident we will be here in the future.

Grants from our Fund for Community Good and other unrestricted funds

- | | |
|---|--|
| 1. Family Futures
\$75,000 | 11. Grand Rapids Downtown Market
\$250,000 |
| 2. Friends of Grand Rapids Parks
\$189,200 | 12. Habitat for Humanity of Kent County
\$150,000 |
| 3. Spectrum Health Foundation
\$40,000 | 13. Local First
\$200,000 |
| 4. Grand Rapids Symphony
\$35,000 | 14. Kent Intermediate School District
\$250,000 |
| 5. John F. Kennedy Center for the Performing Arts
\$25,000 | 15. KConnect
\$300,000 |
| 6. Michigan League of Conservation Voters
\$25,000 | NOT MAPPED: Health Intervention Services
\$60,000 |
| 7. Grand Valley State University
\$10,000 | Goodwill Industries of Greater Grand Rapids, Inc.
\$75,000 |
| 8. Partners for a Racism-Free Community
\$25,000 | West Michigan Trails & Greenways Coalition
\$150,000 |
| 9. Planned Parenthood of West and Northern Michigan
\$100,000 | Trout Unlimited, Inc.
\$75,000 |
| 10. Grand Rapids Public Schools
\$500,000 | Schrems West Michigan Trout Unlimited
\$100,000 |

PROFESSIONAL ADVISOR COMMITTEE

Dan Baas, Founders Bank & Trust	Marilyn Lankfer, Varnum LLP
Lori Baker, Baker Holtz	Daniel Miller, Edward Jones Investments
Glen Borre, Miller Johnson	Jeffrey Power, Warner Norcross & Judd LLP
Jason Brinks, Oxford Financial Group, Ltd.	Nicholas Reister, Smith, Haughey, Rice & Roegge
Robert Brower, Miller Johnson	Thomas Roberts, Macatawa Bank
Mandy Chardoul, Plante & Moran	Robert Schellenberg, Schellenberg & Evers, PC
Pamela Cross, Rhoades McKee PC	Eric Schmidt, Miles V. Schmidt CPA PLC
Christopher Edgar, Miller Johnson	Kristen Smith, Beene Garter LLP
Charles Frayer, Crowe Horwath LLP	Michael Taylor, Miller Johnson
Frederick Gaul, Fifth Third Bank	W. Michael Van Haren, Warner Norcross & Judd LLP
Dirk Hoffius, Varnum LLP	Marilyn Zack, staff
Thomas Jeakle, Prangley Marks LLP	
Neil Kimball, Mika, Meyers, Beckett & Jones	
Bonnie Kopp, Northern Trust Bank	
Thomas Kyros, Varnum LLP	



Professional Advisors and Grand Rapids Community Foundation

In the planning process, clients want professional advisors to provide the same level of expert advice and guidance about philanthropy as they do for other financial, trust and legal affairs. When talking with a client about the sale of a business, closely held stock, an inheritance or other complex transaction, advisors often suggest philanthropy as a solution. Grand Rapids Community Foundation's development professionals are experts in this area and can help facilitate these important conversations.

For more information or assistance, please contact Marilyn Zack, vice president of development, at 616.454.1751. Our website also has resources for advisors under the ADVISE tab at www.grfoundation.org.

Keep in Touch

VISIT US
www.grfoundation.org

LIKE US
www.facebook.com/GRCommFound

FOLLOW US
www.twitter.com/GRCommFound

WATCH US
www.vimeo.com/grcommfound

EMAIL US
grfound@grfoundation.org

LOCATE US
185 Oakes Street SW, Grand Rapids, Michigan 49503

CALL US
616.454.1751

Making the Most of Your Philanthropy

Grand Rapids Community Foundation has a staff of professionals to help you accomplish your philanthropic goals. Whether you are interested in giving during your lifetime as an annual donor to the Fund for Community Good—or want to establish a fund or create a planned gift—we are here to help. We'll listen and provide ideas and options to help you find your unique way to help make our greater Grand Rapids community even greater!



Our mural, "Humanity at the Crossroads" is on the east side of our building, located at 185 Oakes Street SW, Grand Rapids, Michigan 49503



ART DIRECTION/ DESIGN: Peopledesign

PHOTOGRAPHY: Jill DeVries

WRITING/PROJECT MANAGEMENT:
Roberta F. King, Vice President, PR & Marketing

COPY EDITING: Joan Huyser-Honig